



TMX-2050

DISPLAY

The TMX-2050™ display is an advanced, in-cab, multi-touch screen display, built on the Android™ operating system that integrates into your operation seamlessly. The intuitive interface makes it easy for both beginning and advanced users to implement precision agriculture solutions. Moving beyond traditional precision agriculture functionality, the easy-to-use TMX-2050 display provides real farm management decision-making tools in the cab.

PRECISION AGRICULTURE CAPABILITIES

- ▶ Manual guidance, mapping and virtual section control
- ▶ Trimble® steering system compatibility
- ▶ NextSwath™ end-of-row turn technology to optimise the implement turn for the next pass
- ▶ Field-IQ™ system and several industry leading protocols offer automatic section and rate control
- ▶ ISOBUS for section and variable rate application control
- ▶ Wireless field to office data exchange

LOCAL MOBILE APPS

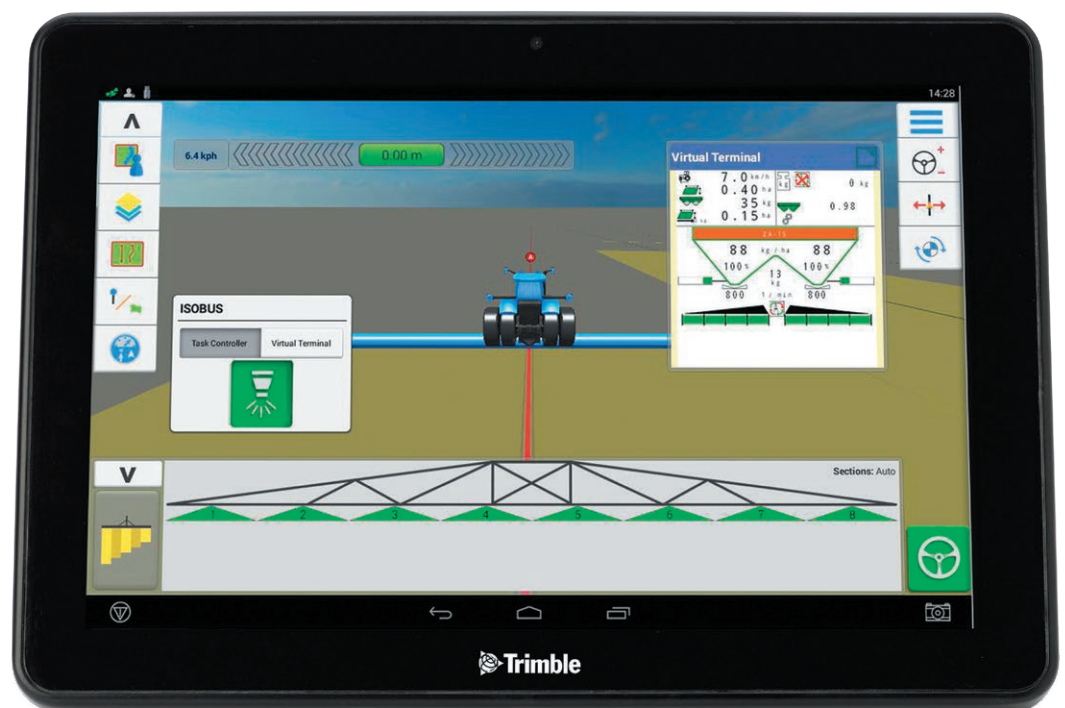
The TMX-2050 display features targeted mobile applications for the work you need to do. The Android environment offers stability and reliability within the same environment you enjoy on mobile devices today. You'll be able to access a list of useful Apps such as TeamViewer, CoPilot, and plenty of others from manufacturers or local software companies.

EFFICIENT DATA TRANSFER THROUGHOUT THE FARM

Providing instant access to the suite of Connected Farm® apps, the TMX-2050 display helps you visualise all that data and your on-site operations directly from the machine cab. Wirelessly share data between vehicles or transfer information from the field to the office in real time—providing all your operators with up-to-date, consistent maps and guidance lines.

Key Features

- ▶ Large 30.5 cm high-definition colour touchscreen display
- ▶ Customisable tablet-like interface similar to your other mobile devices
- ▶ Choice of configurations with Precision-IQ™ and FmX® Plus display software
- ▶ Android Platform ready for future development
- ▶ Rugged construction for everyday field use
- ▶ One integrated camera with support for an additional external camera
- ▶ Easily transferred between vehicles





CHOICE OF CONFIGURATIONS AND DISPLAY SOFTWARE

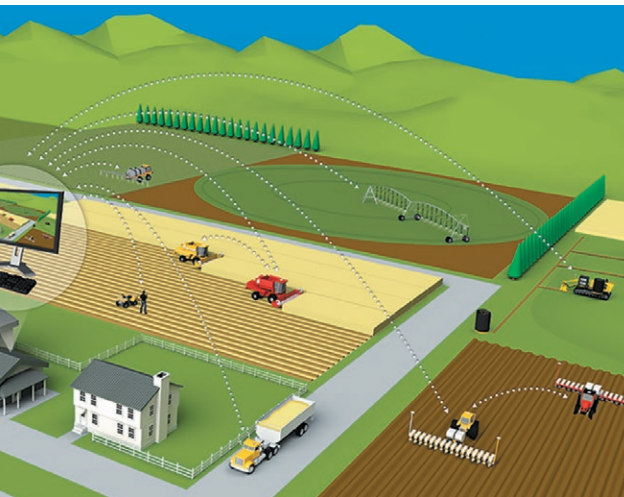
Choose the configuration and display software that meets your specific needs and price point:

TMX-2050 display with the Precision-IQ app

The Trimble Precision-IQ app provides a graphics-rich and streamlined workflow designed specially for today's leading grower. Implement the latest platform for connectivity with auto-guidance, and standardised protocols including ISO and Trimble TUVR for variable rate applications.

TMX-2050 display with the Precision-IQ and FmX Plus apps

Increase your functionality with the additional feature set available in FmX Plus, including implement steering, end-of-row turns, water management and yield monitoring. Leverage the same familiar workflows and menus of the Trimble FmX integrated display with the advantage of faster processing and connectivity—without the need to retrain or learn new software.



CONNECTED FARM APPS

The TMX-2050 display offers a variety of Connected Farm apps to assist with data management. Key benefits of these apps include:

- ▶ Entering details about each field operation (tillage, planting, spraying, harvest, etc.) for improved reporting to the EPA or other government agencies
- ▶ Viewing local weather maps and virtual rain gauges to assist with field operation planning
- ▶ Tracking real-time movement of vehicle operators and their status (idling, working, or travelling)
- ▶ Monitoring or controlling pivot irrigation systems

AVAILABLE ACCURACY LEVELS

Choose the right accuracy for your farming operations. Our high-performance correction options range from high-accuracy to entry-level in a variety of delivery options—ideal for almost any location, crop type, field shape, or soil type.

Trimble's CenterPoint® RTX and RangePoint® RTX correction services provide substantial performance benefits for your guidance display—increasing your field operation accuracy, yield, and profits.

CenterPoint RTK < 2.5 cm accuracy	CenterPoint VRS™ < 2.5 cm accuracy	CenterPoint RTX < 2.5 cm accuracy	RangePoint RTX < 15 cm accuracy	SBAS (EGNOS) 15–20 cm accuracy
--	---	--	--	---





Vantage New Zealand
Level 1, 167 Main Street
Methven, NZ
0800 482 682
info@vantage-nz.com
www.vantage-nz.com

Contact your Trimble Ag Reseller today

NORTH AMERICA
Trimble Agriculture Division
10368 Westmoor Drive
Westminster, CO 80021
USA
+1-720-887-6100 Phone
+1-720-887-6101 Fax

Trimble Inc.
Corporate Headquarters
935 Stewart Drive
Sunnyvale, CA 94085
USA
+1-408-481-8000 Phone
+1-408-481-7740 Fax

EUROPE
Trimble Germany GmbH
Am Prime Parc 11
65479 Raunheim
GERMANY
+49-6142-2100-0 Phone
+49-6142-2100-140 Fax

© 2015–2019, Inc. All rights reserved. Trimble, the Globe & Triangle logo, CenterPoint, Connected Farm, FmX, and RangePoint are trademarks of Trimble Inc., registered in the United States and in other countries. Field-IQ, NextSwath, Precision-IQ, and TMX-2050 are trademarks of Trimble Inc. Android is a trademark of Google Inc. All other trademarks are the property of their respective owners. PN 022503-1414D-UK (10/19)